

GOAL 2: International Immigration

New Brunswick will receive a percentage of international immigrants equal to its national population share (~2.08% for 2018 or approximately 6300 immigrants this year).

Status: PROGRESSING

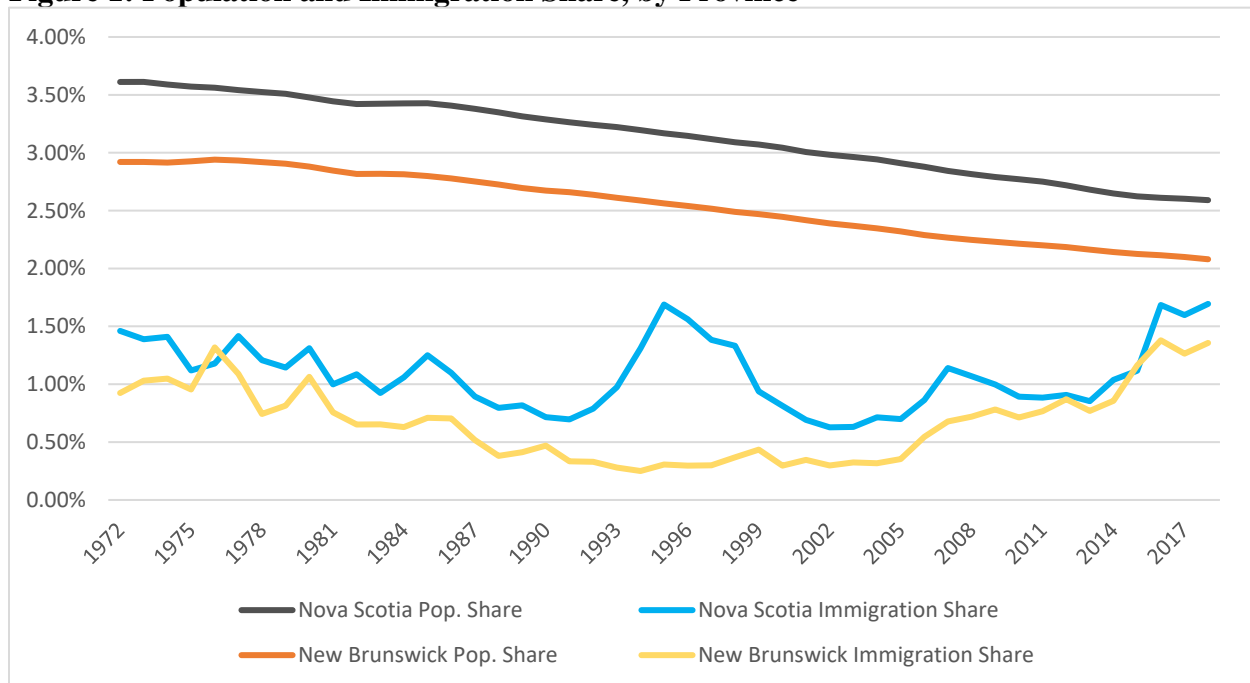
Current Situation

New Brunswick should consider stimulating economic growth by increasing its population size. This could be accomplished not only by promoting interprovincial migration (see Goal 1), but also by receiving a larger number of immigrants. If New Brunswick adopts the same strategy outlined by *OneNS* for Nova Scotia, we would aim to receive a percentage of international immigrants to Canada equal to New Brunswick's share of the Canadian population. New Brunswick represents 2.08% of the population of Canada, so its immigration goal should be to receive 2.08% of the country's incoming international immigrants.

Between 2015 and 2018, New Brunswick experienced its highest annual immigration share on record: during this time, its percentage of Canada's international immigrants grew from approximately 0.80% to ~1.30%. In 2016, immigration reached an all-time high for the province, with 4,458 international arrivals—2,439 more than in 2014. As *OneNS* suggests, these elevated numbers reflect the large influx of refugees coming throughout Canada; nonetheless, the percentage of immigrants settling in New Brunswick has been steadily increasing since the early 2000s, with numbers growing even more rapidly in recent years.

Section One: International Immigration Share in the Province

Figure 1: Population and Immigration Share, by Province



Interpreting the Data

New Brunswick is on-track to bring in a percentage of international immigrants equal to its population share, this is due to record high numbers of immigrants to the province, but also due to the province's slow population growth, which has eroded the province's share of the Canadian population.

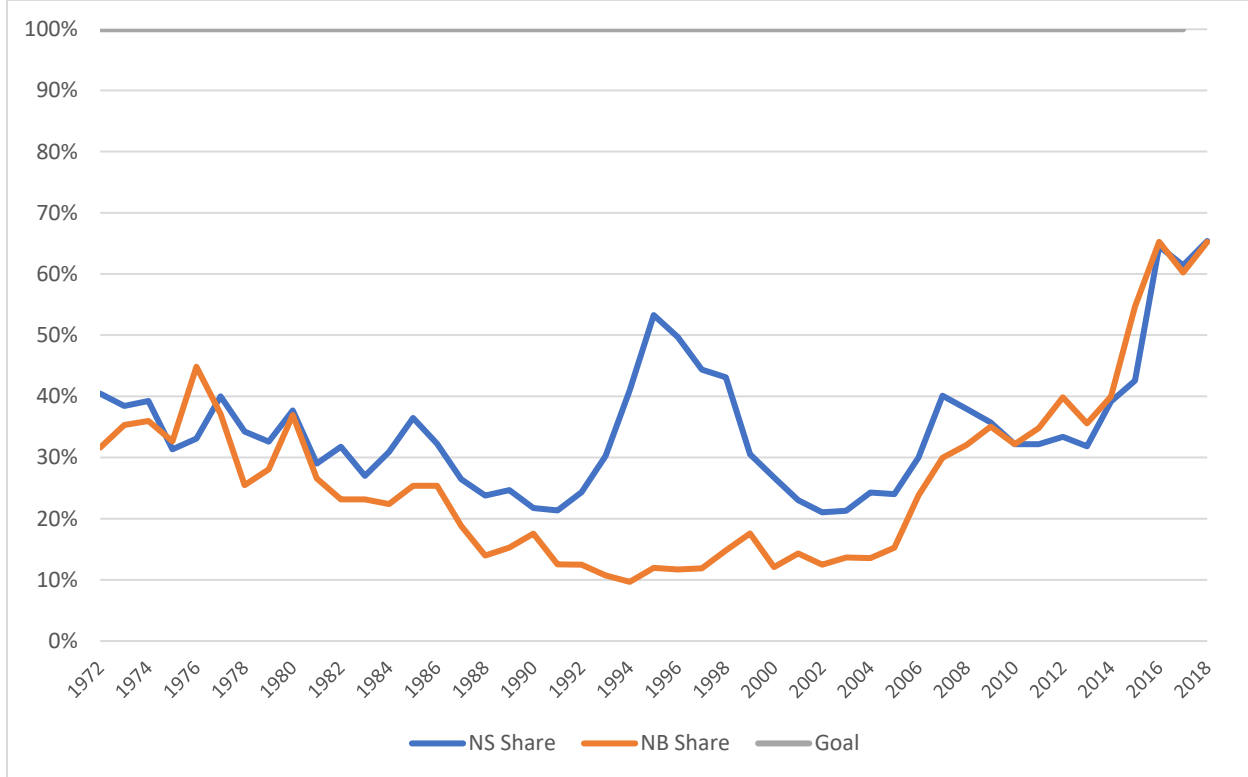
The province's immigration share is still lower than its population share. In 2018, New Brunswick received only 1.36% of the immigrant population arriving in Canada, rather than the approximated 2.08%. Thus, even with increasing numbers of immigrants coming to New Brunswick, the province still only achieved 65% of the suggested goal that year (see Figure 2).

Year	NS Pop. Share	NB Pop. Share	NS Immi. Share	NB Immi. Share
1972	3.61%	2.92%	1.46%	0.92%
1973	3.61%	2.92%	1.39%	1.03%
1974	3.59%	2.91%	1.41%	1.05%
1975	3.57%	2.93%	1.12%	0.95%
1976	3.56%	2.94%	1.18%	1.32%
1977	3.54%	2.93%	1.42%	1.09%
1978	3.52%	2.92%	1.21%	0.74%

1979	3.51%	2.91%	1.14%	0.82%
1980	3.48%	2.88%	1.31%	1.06%
1981	3.44%	2.85%	1.00%	0.76%
1982	3.42%	2.82%	1.09%	0.65%
1983	3.42%	2.82%	0.92%	0.65%
1984	3.43%	2.81%	1.06%	0.63%
1985	3.43%	2.80%	1.25%	0.71%
1986	3.41%	2.78%	1.10%	0.70%
1987	3.38%	2.75%	0.89%	0.52%
1988	3.35%	2.73%	0.80%	0.38%
1989	3.31%	2.70%	0.82%	0.41%
1990	3.29%	2.67%	0.71%	0.47%
1991	3.26%	2.66%	0.70%	0.33%
1992	3.24%	2.64%	0.79%	0.33%
1993	3.22%	2.61%	0.97%	0.28%
1994	3.20%	2.59%	1.31%	0.25%
1995	3.17%	2.56%	1.69%	0.31%
1996	3.15%	2.54%	1.56%	0.30%
1997	3.12%	2.52%	1.38%	0.30%
1998	3.09%	2.49%	1.33%	0.37%
1999	3.07%	2.47%	0.94%	0.43%
2000	3.04%	2.45%	0.81%	0.30%
2001	3.01%	2.42%	0.69%	0.35%
2002	2.98%	2.39%	0.63%	0.30%
2003	2.96%	2.37%	0.63%	0.32%
2004	2.94%	2.35%	0.71%	0.32%
2005	2.91%	2.32%	0.70%	0.35%
2006	2.88%	2.29%	0.86%	0.54%
2007	2.84%	2.27%	1.14%	0.68%
2008	2.81%	2.25%	1.07%	0.72%
2009	2.79%	2.23%	1.00%	0.78%
2010	2.77%	2.21%	0.89%	0.71%
2011	2.75%	2.20%	0.88%	0.77%
2012	2.72%	2.18%	0.91%	0.87%
2013	2.68%	2.16%	0.85%	0.77%
2014	2.65%	2.14%	1.04%	0.86%
2015	2.62%	2.13%	1.12%	1.16%
2016	2.61%	2.11%	1.68%	1.38%
2017	2.60%	2.10%	1.60%	1.26%
2018	2.59%	2.08%	1.69%	1.36%

Source: Statistics Canada, CANSIM Table 051-0004: Components of population growth, Canada, provinces and territories, annual (persons) (1); Statistics Canada, CANSIM Table 051-0005: Estimates of population, Canada, provinces and territories, quarterly (persons) (1,2,3,6)

Figure 2: Percentage of Goal Achieved: Share of Immigrants to Share of National Population



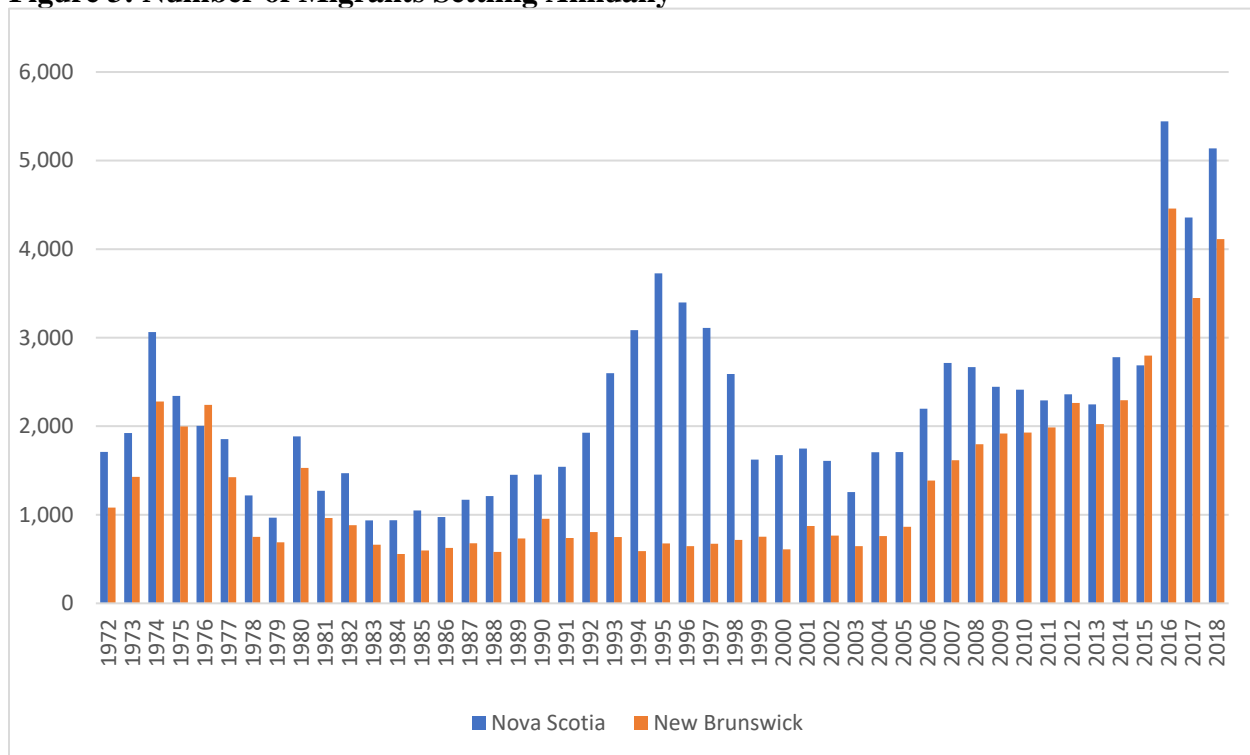
Year	NS – Percentage to target immigrant intake	NB – Percentage to target immigrant intake
1972	40.44%	31.63%
1973	38.43%	35.31%
1974	39.25%	35.96%
1975	31.33%	32.64%
1976	33.09%	44.83%
1977	39.99%	37.11%
1978	34.25%	25.48%
1979	32.60%	28.06%
1980	37.68%	36.93%
1981	29.00%	26.59%
1982	31.76%	23.16%
1983	26.99%	23.17%
1984	30.93%	22.39%
1985	36.46%	25.37%
1986	32.25%	25.38%
1987	26.46%	18.82%
1988	23.78%	13.98%
1989	24.67%	15.29%
1990	21.75%	17.55%
1991	21.34%	12.54%
1992	24.34%	12.48%

1993	30.23%	10.74%
1994	41.00%	9.67%
1995	53.29%	11.95%
1996	49.66%	11.69%
1997	44.38%	11.89%
1998	43.10%	14.81%
1999	30.53%	17.59%
2000	26.74%	12.10%
2001	23.01%	14.32%
2002	21.04%	12.49%
2003	21.30%	13.67%
2004	24.27%	13.55%
2005	24.01%	15.24%
2006	29.99%	23.80%
2007	40.10%	29.94%
2008	37.97%	32.05%
2009	35.74%	35.06%
2010	32.19%	32.18%
2011	32.17%	34.83%
2012	33.39%	39.84%
2013	31.85%	35.58%
2014	39.16%	39.96%
2015	42.56%	54.66%
2016	64.49%	65.25%
2017	61.41%	60.25%
2018	65.40%	65.22%

Source: Statistics Canada, CANSIM Table 051-0004: Components of population growth, Canada, provinces and territories, annual (persons) (1); Statistics Canada, CANSIM Table 051-0005: Estimates of population, Canada, provinces and territories, quarterly (persons) (1,2,3,6)

Section Two: Annual Immigration Settlement

Figure 3: Number of Migrants Settling Annually



Interpreting the Data

From 2006 to 2018, New Brunswick's immigration numbers increased, and they reached their highest point of the 1972-2018 study period in 2016. However, from 1991 to 2005, New Brunswick also experienced its lowest immigration levels in 40 years, whereas Nova Scotia saw substantially higher numbers.

Year	NS	NB
1972	1,709	1,081
1973	1,923	1,428
1974	3,064	2,279
1975	2,342	1,998
1976	2,004	2,241
1977	1,854	1,425
1978	1,219	751
1979	967	689
1980	1,885	1,530
1981	1,271	963
1982	1,470	883
1983	937	662

1984	939	558
1985	1,049	596
1986	974	625
1987	1,170	678
1988	1,212	580
1989	1,452	732
1990	1,454	954
1991	1,542	738
1992	1,927	804
1993	2,599	748
1994	3,084	589
1995	3,726	676
1996	3,397	646
1997	3,111	673
1998	2,590	717
1999	1,624	752
2000	1,674	609
2001	1,747	874
2002	1,609	765
2003	1,257	645
2004	1,707	760
2005	1,708	865
2006	2,197	1,386
2007	2,715	1,616
2008	2,668	1,797
2009	2,446	1,918
2010	2,413	1,928
2011	2,292	1,986
2012	2,360	2,263
2013	2,246	2,024
2014	2,779	2,293
2015	2,688	2,797
2016	5,442	4,458
2017	4,357	3,448
2018	5,137	4,113

Source: Statistics Canada, CANSIM Table 051-0004: Components of population growth, Canada, provinces and territories, annual (persons) (1)

Sources

- *OneNS.ca*
- Statistics Canada
 - CANSIM Table 051-0004: Components of population growth, Canada, provinces and territories, annual (persons) (1)
 - CANSIM Table 051-0005: Estimates of population, Canada, provinces and territories, quarterly (persons) (1,2,3,6)